

**See Clearly.  
Act Confidently.**

**Precise.  
Efficient.  
Intuitive.**

**Turn images into answers.  
On the spot.**

The Trident HD system elevates specimen imaging. It's the latest device to use our amorphous selenium, direct-capture technology to eliminate the image degrading effects of light diffusion and improve image conspicuity. The system's Automatic Exposure Control (AEC) is optimized for breast excisions and core biopsies, and its advanced algorithm was created specifically for breast specimen radiography processing.

Faxitron™  
**Trident® HD**  
Specimen Radiography System

# With the Hologic Trident<sup>®</sup> HD Specimen Radiography System, you know with certainty.

When it comes to performing breast conserving surgeries, mastectomies, or stereotactic breast biopsies, nothing is more important than being sure. **Are the margins clear? Do you have the specimen of interest? Have the markers been captured?**

This next-generation solution taps into the power of Hologic's proven detector technology to generate sharp, highly detailed images for rapid sample verification in the operating or procedure room.

**No transporting the specimen to another room for imaging. No waiting for margin confirmation. No costly scheduling delays.**

Instead, you have the quality images you need to make informed clinical decisions on the spot, which streamlines workflow, shortens procedure time and helps reduce recalls.

Trident HD's sleek, modern, ergonomic design yields a small footprint, making it easy to manoeuvre, yet its imaging area is large enough to accommodate a large range of sample sizes.

**The Trident HD system is fast to learn, easy to use and simple to maintain which gives you more time to do what you do best - take care of your patients.**



## Precise

### Exceptional Image quality

- Same detector technology as the market leading Dimensions<sup>®</sup> platform and Affirm<sup>®</sup> prone system: amorphous selenium direct capture imaging to render crisp, clear, high resolution images.
- Compare specimen image with original mammogram or biopsy on one screen.
- Automated Exposure control (AEC).



## Efficient

### Improved workflow

- Instant verification right in the procedure or operating room results in faster completion time without the need to wait for margin confirmation.
- Easy integration to facility and WiFi.
- Ability to send images to SecurView<sup>™</sup> DX Workstation or PACS with a single touch.



## Intuitive

### Ease of use

- Intuitive control panel and software interface.
- Robust tool set including annotate, measure and zoom.
- Easy to clean, modern enclosed design.
- Small footprint to maximize operating room space.



The detector size of 16x18cm is specifically designed to meet the demands in the Operating Room.



An optional barcode scanner makes it quick and easy to pull up a patient's clinical data and history during a procedure.



A flat touchscreen display with enclosed design enables easy cleaning to support your infection control protocols.

Ability to view priors on the same screen speeds up comparison and analysis.

Software-driven system eliminates the risk of damage to physical keys.

Auto-sensing magnification to reduce procedural steps.

Enhanced productivity by fast and easy access to the Modality Worklist.

Excellent mobility of the compact system.



Tilt and swivel the high resolution monitor for optimal viewing.

Review user manual and watch training videos right on the monitor.

User-friendly and easy to clean touchpad controls and software interface.

Window allows user to maintain orientation of the specimen.

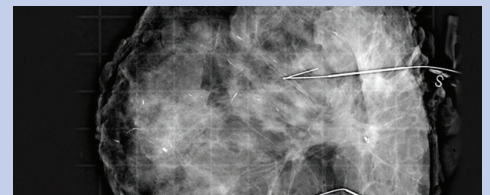
Interlocked X-ray chamber door without restricting access.



Wireless integration supports advanced image sharing and transfer of patient records to PACS or a SecurView® DX workstation – with a single touch.



Uses the same amorphous selenium detector technology as Hologic Dimensions® and Affirm® Prone platforms for exceptional image quality



Count on exceptional quality. An image can be acquired every 25 seconds to help make fast, informed decisions in the operating room, Radiology or Pathology departments.



# Hologic offers the Total Breast Imaging Solution for the OR.

## PRE-SURGERY PLANNING



Use Viera Ultrasound imaging to locate the lesion and determine where to make the initial incision.

## DURING SURGERY



Use the LOCalizer system and Viera Ultrasound to confirm location of lesion.

## POST EXCISION



Use Trident HD system's x-ray imaging on the excised specimen.

**Viera™**  
Portable Breast Ultrasound

The first wireless, handheld breast ultrasound with exceptional breast image quality.



**Precise**



**Portable**



**Affordable**

[www.VieraPortableUltrasound.com](http://www.VieraPortableUltrasound.com)

**LOCalizer™**  
Wire-free Guidance System

Precision guidance for breast surgeries with RFID technology.



**Precise**



**Simple**



**Portable**

[www.LocalizerWireFreeGuidance.com](http://www.LocalizerWireFreeGuidance.com)

**Faxitron™**  
**Trident® HD**  
Specimen Radiography System

Turn images into answers. On the spot.



**Precise**



**Efficient**



**Intuitive**

[www.hologic.com/hologic-products](http://www.hologic.com/hologic-products)

[www.hologic.com](http://www.hologic.com) | [info@hologic.com](mailto:info@hologic.com) | +32.2.711.4680